

The HP Compaq 6730b Notebook PC offers cost-effective business computing without compromising on performance or connectivity. This newly designed notebook works just as hard as you do and includes features such as the latest wireless technologies, enhanced security, and compatibility with a range of HP Universal Accessories.



15.4-inch diagonal widescreen display

High-resolution WSXGA+ display with HP BrightView display that improves the brightness, contrast and clarity of your viewing experience.

Upgrade bay with dual HDD support.

Easily replace your optical drive with an optional secondary hard drive or upgrade to the next-generation optical drive.

Intel® Core™2 Duo processors

With Intel® Core™2 Duo processors, experience new levels of system responsiveness when running multiple applications and smarter battery performance designed to help extend mobility.

Smart new slive grey design

Weighing only 2.69 kg and 33.6 mm thin, the HP Compaq 6730b proves that the union of style and substance endures.

More networking options

Integrated HP un2400 EV-DO/HSPA Mobile Broadband Module and Wi-Fi CERTIFIED™ WLAN help your business stay in touch.



Primary Battery Life*

- 6-cell (47 WHr) Lithium-Ion battery up to 4h 45m
- 6-cell (55 WHr) Lithium-Ion battery up to 6h 00m
- + HP 8-cell (52 WHr) Extended Life battery up to 12h 00m
- + HP 12-cell (95 WHr) Ultra-Capacity battery up to 15h 30m

* Battery life will vary depending on the product configuration, product model, applications loaded on the product, power management settings of the product, and the product features used by the customer. As with all batteries, the maximum capacity of this battery will decrease with time and usage.

HP Compaq 6730b Notebook PC

Specifications

Operating system	Preinstalled: Genuine Windows Vista® Business 32 Genuine Windows Vista® Home Basic 32 Genuine Windows Vista® Business downgrade to Genuine Windows® XP Professional ¹⁵ Free DOS	Supported: Genuine Windows Vista® Business 64 Genuine Windows Vista® Enterprise
Processor²	Intel® Core™ 2 Duo Processor T9600 (2.80 GHz, 6 MB L2 cache, 1066 MHz FSB) Intel® Core™ 2 Duo Processor T9400 (2.53 GHz, 6 MB L2 cache, 1066 MHz FSB) Intel® Core™ 2 Duo Processor P8600 (2.40 GHz, 3 MB L2 cache, 1066 MHz FSB) Intel® Core™ 2 Duo Processor P8400 (2.26 GHz, 3 MB L2 cache, 1066 MHz FSB)	
Chipset	Intel® GE45 Express Chipset with ICH9M	
Memory¹³	DDR2 SDRAM, 800MHz, two slots supporting dual channel memory, 1024/2048/4096MB SODIMMs, up to 8192MB total	
Internal Storage⁷	120/160/250GB 5400rpm SATA HDD, 160GB 7200rpm SATA HDD, HP 3D DriveGuard	
Upgrade Bay	Fixed 12.7mm SATA optical drive or secondary hard drive: DVD+/RW SuperMulti DL LightScribe Drive, DVD/CD-RW Combo Drive, DVD-ROM drive; ³ 250GB 5400rpm HDD	
Display	15.4-inch diagonal WXGA Anti-Glare (1280 x 800), 15.4-inch diagonal WXGA BrightView (1280 x 800), 15.4-inch diagonal WSXGA+ WVA Anti-Glare (1680 x 1050)	
Graphics^{8, 12}	Mobile Intel® Graphics Media Accelerator 4500M HD, Microsoft® DirectX 10 capable	
Audio	High definition audio, stereo speakers, stereo headphone/line out, stereo microphone in, integrated microphone (integrated dual-microphone array with webcam)	
Wireless support^{4, 5, 6}	Optional HP un2400 EV-DO/HSPA Mobile Broadband Module (requires mobile network operator service); Intel 802.11a/b/g/n draft 2.0, Broadcom 802.11a/b/g/n draft 2.0, b/g, HP Integrated Module with Bluetooth® Wireless Technology; HP Wireless Assistant	
Communications⁹	Broadcom NetLink Gigabit Ethernet PCI Controller (10/100/1000 NIC), 56K v.92 modem	
Expansion slots	1 ExpressCard/54 slot (also supports ExpressCard/34), Media Card Reader	
Ports and connectors	4 USB 2.0 ports, VGA, S-video TV out, stereo microphone in, stereo headphone/line out, 1394a power connector, RJ-11/modem, RJ-45/ethernet, serial port, docking connector, secondary battery connector	
Input device	Full-sized keyboard, touchpad with scroll zone, VoIP ready ⁵ – optional VGA webcam with dual-microphone array, touch-sensitive controls	
Software	HP Recovery Manager, HP Help and Support Center, HP QuickLook 2, HP Universal Print Driver, HP ProtectTools Security Manager, HP Quick Launch Buttons, HP Wireless Assistant, Microsoft® Office Ready with 60-day Office Professional 2007 Trial Edition (select models), PDF Complete SE, Intervideo WinDVD – DVD Player, Roxio Creator Business (for optional DVD+/RW and DVD/CDRW drives), McAfee Total Protection, ¹⁴ Synaptics Touchpad Driver, Microsoft® Windows Live Messenger (select models), HP Webcam Software (with optional VGA webcam)	
Security	Standard: HP ProtectTools, TPM Embedded Security Chip 1.2, ² Enhanced Pre-Boot Security, HP SpareKey, HP Disk Sanitizer, Enhanced Drive Lock, Drive Encryption for HP ProtectTools, Credential Manager for HP ProtectTools, File Sanitizer for HP ProtectTools; Optional: ¹¹ HP Fingerprint Sensor, Smart Card Reader (replaced ExpressCard), Kensington Lock slot, HP Privacy Filter	
Dimension (h x w x d)	1.32 (at front) x 14.02 x 10.46 in / 33.6 (at front) x 356.0 x 265.6 mm	
Weight	Starting at: 5.93lbs/2.69kg (weight will vary by configuration)	
Power	6-cell (55 WHr) Lithium-Ion battery, 6-cell (47 WHr) Lithium-Ion battery, optional HP (52 WHr) Extended Life Battery, ¹¹ optional HP (95 WHr) Ultra-Capacity Battery, ¹¹ 90W HP Smart AC Adapter, 90W Smart Combo Adapter, ¹¹ HP Fast Charge ¹⁰	
Expansion solutions¹¹	HP Docking Station, HP Advanced Docking Station, HP Monitor Stand, HP Dual-Monitor Stand, HP Adjustable Notebook Stand, HP Mobile Port Replicator	
Warranty	Limited 3-year, 1-year and 90-day warranty options available depending on country, 1-year limited warranty on primary battery	

Footnote

1. Certain Windows Vista product features require advanced or additional hardware. See www.microsoft.com/windowsvista/getready/hardwarereq.mspx and www.microsoft.com/windowsvista/getready/capable.mspx for details. Windows Vista Upgrade Advisor can help you determine which features of Windows Vista will run on your computer. To download the tool, visit www.windowsvista.com/upgradeadvisor.
2. Dual Core is a new technology designed to improve performance of certain software products. Not all customers or software applications will necessarily benefit from use of this technology. 64-bit computing on Intel architecture requires a computer system with a processor, chipset, BIOS, operating system, device drivers and applications enabled for Intel® 64 architecture. Processors will not operate (including 32-bit operation) without an Intel 64 architecture-enabled BIOS. Performance will vary depending on your hardware and software configurations. See www.intel.com/info/em64t for more information.
3. Do not copy copy-right protected materials. Intended for creation and storage of your original material and other lawful uses. Double layer discs can store more data than single layer discs. Double-layer discs burned with this drive may not be compatible with many existing single-layer DVD drives and players. LightScribe creates a monochrome image. LightScribe media required and sold separately. Note that DVD-RAM cannot read or write to 2.6 GB Single Sided/5.2 GB Double Sided – Version 1.0 media. Wireless access point required and is not included. Availability of public wireless access points limited. Wireless, internet, and VoIP require separately purchased service contract.
4. Wireless broadband use requires separately purchased service contract. Check with service provider for availability and coverage in your area. Available in select countries only.
5. WiFi access point and Internet service required and not included. Availability of public wireless access points limited. Wireless, internet and VoIP require separately purchased service contract.
6. The specifications for the 802.11n WLAN are draft specifications and are not final. If the final specifications differ from the draft specifications, it may affect the ability of the notebook to communicate with other 802.11n WLAN devices.
7. For hard drives, GB = 1 billion bytes. Actual formatted capacity is less. Up to 8 GB (for XP) and 10 GB (for Vista) of system disk is reserved for the system recovery software.
8. Shared video memory (UMA) uses part of the total system memory for video performance. System memory dedicated to video performance is not available for other use by programs.
9. The term "10/100/1000" or "Gigabit" Ethernet indicates compliance with IEEE standard 802.3ab for Gigabit Ethernet, and does not connote actual operating speed of 1GB/sec. For high speed transmission, connection to a Gigabit Ethernet server and network infrastructure is required.
10. HP Fast Charge technology recharges your battery up to 90% within 90 minutes when the system is off. Fast Charge does not apply to 12-cell Ultra-Capacity battery.
11. Sold separately or purchased as an optional feature.
12. HD content required to view HD images.
13. Dual Channel is only supported when the system is configured with DDR2 symmetric memory (ie: 2x256).
14. 60 day trial period. Internet access required to receive updates. First update included. Subscription required for updates thereafter. This McAfee Total Protection for Small Business software is licensed to you by McAfee under the terms of the McAfee end user license agreement which can be read at www.mcafee.com.
15. Windows Vista Business disk also included for future upgrade if desired. To qualify for this downgrade an end user must be a business (including governmental or educational institution) and is expected to order annually at least 25 customer systems with the same custom image.
16. TPM module disabled where use is restricted by law; for example, Russia and China.



© 2008 Hewlett-Packard Development Company, L.P. All rights reserved. The information contained herein is subject to change without notice. The only warranties for HP products and services are set forth in the express warranty statements accompanying such products and services. Nothing herein should be construed as constituting an additional warranty. HP shall not be liable for technical or editorial errors or omissions contained herein. Bluetooth is a trademark of its proprietor and used by Hewlett-Packard Company under license. Microsoft and Windows are U.S. registered trademarks of Microsoft Corporation. Windows Vista is either a registered trademark or trademark of Microsoft Corporation in the United States and/or other countries. Intel and Core are trademarks or registered trademarks of Intel Corporation or its subsidiaries in the U.S. and other countries.

HP recommends Windows Vista® Business.

B-series
Designed for business. Engineered to last.

ACCESS EMAIL, CALENDAR, CONTACTS IN SECONDS.



HP QUICKLOOK 2

BUSINESS IS
PERSONAL.

HP Compaq 6730b
Notebook PC



ENJOY HP PROFESSIONAL INNOVATIONS WITH THE HP COMPAQ 6730B NOTEBOOK PC

Built to protect

- Permanently destroy selected files and folders, so that they cannot be easily recovered with **HP File Sanitizer**.
- New Drive Encryption for **HP ProtectTools**, encodes all your information on the hard drive volume making it unreadable to an unauthorised person.
- In the event that you have forgotten your password, **HP SpareKey** will identify you by asking 3 personal questions. That makes secure access simple yet convenient.

Built to simplify

- Directly access your email, calendars and contact information with **HP QuickLook 2**.
- **HP SoftPaq Download Manager** makes updating of software easy with its centralised interface.
- **HP Universal Accessories** promote easy sharing of accessories for more flexibility and value from IT investment.

Built to last

- Enjoy maximum durability and protect your notebook from wear and tear with **HP DuraFinish**.
- Reduce risk of corruption or loss of data and protect your notebook from system failures caused by operational shock with **HP 3D DriveGuard**.

KEY FEATURES



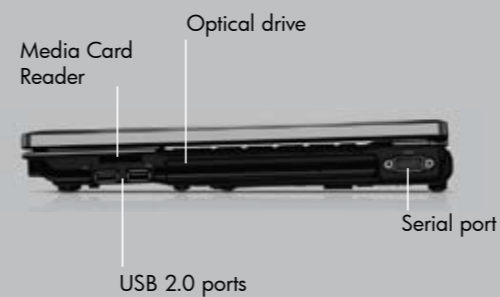
Left view



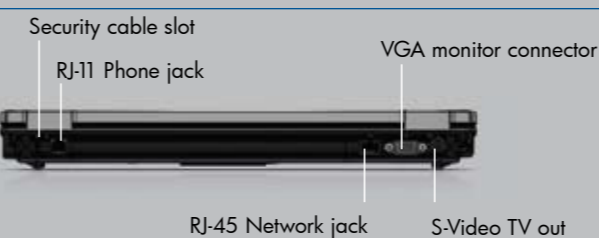
Front view



Right view



Back view



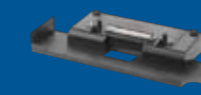
Notebook docking solutions – Turn your notebook into a desktop.



HP 2008 Docking Station
Part No: KP080AA



HP 2008 Advanced Docking Station
Part No: KP081AA



HP Mobile Port Replicator
Part No: AK155AA



HP Adjustable Notebook Stand
Part No: PA508A



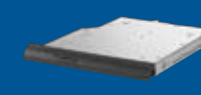
HP Monitor Stand
Part No: PA507A

Memory – Extract maximum performance from your notebook.



HP Memory DDR2 800 MHz
Part No: KT292AA

Storage solutions – Expand your business storage capability.



HP Upgrade Bay DL DVD+/-RW ODD
Part No: AK869AA



HP Upgrade Bay 250GB 5400rpm HDD
Part No: AK868AA



HP 250GB Pocket Media Drive
Part No: FE477AA

Adapter solutions – Power and charge your battery simultaneously.



HP 90W Smart AC Adapter
Part No: ED495AA

Power solutions – The stamina to stay in the field longer.



HP 6700b/6500b Series 6-cell Battery
Part No: KU531AA



HP 8-Cell Extended Life Battery
Part No: AJ359AA



HP 12-Cell Ultra-Capacity Battery
Part No: EJ092AA

Security options – Keeping your data and notebook safe.



HP/Kensington Security Cable Lock
Part No: PC766A



HP 15.4" Privacy Filter
Part No: AJ358AA

HP recommends Windows Vista® Business.

- HP Docking Stations provide port replication and cable management, plus expandability through an integrated SATA upgrade bay* and ExpressCard slot*.
- Additional USB ports allow you to connect more peripherals to make you more productive. The optional integrated HP/Kensington Cable Lock allows you to secure your docking station, notebook and integrated SATA drive* with one lock.

* Only for HP 2008 Advanced Docking Station

- The HP Mobile Port Replicator provides you with access to additional ports on your HP Business Notebook while giving you mobility. It can be used simultaneously with the HP Extended Life Battery.

- Turn your HP Business Notebook into a desktop solution supporting up to two displays (notebook display plus monitor or two external displays) or completely eliminate the external display by raising your computer screen to a comfortable level.

- This space-saving monitor stand can support up to 45kg while its open-sided design allows easy access to frequently used bays, slots and ports on the docking station.

- Certified HP Memory maximises system performance and creates faster startup times with less delay during routine operations.

- HP Upgrade Bay Optical Disk Drive or Hard Disk Drives provide an convenient and easy way for you to expand your storage.

- HP 250GB Pocket Media Drive provides convenient access to additional storage through your notebook USB port.

- HP Smart AC power adapters power your notebook and charge the internal battery simultaneously. These adapters provide you with the ability to power your notebook when away from the office or on the road.

- These primary batteries allow you to power your notebook on the go.

- HP 8-Cell Extended Life Battery and HP 12-Cell Ultra-Capacity Battery extend your notebook battery by two to three times.

- Made from high grade steel and Kevlar brand fibre, you can have peace of mind that your notebook and docking station are safely secured.

- Protect your notebook screen from prying eyes. HP Privacy Filters are designed to fit HP Business Notebooks without stick-on holders. You can attach and remove the privacy filter in seconds, and you can even leave it in place when your notebook computer is closed.

HP UNIVERSAL ACCESSORIES

HP offers you a comprehensive range of accessories to enhance and enrich your computing experience.